

# Partner with us

Collaborating for a productive,  
resilient and sustainable  
Murray–Darling Basin



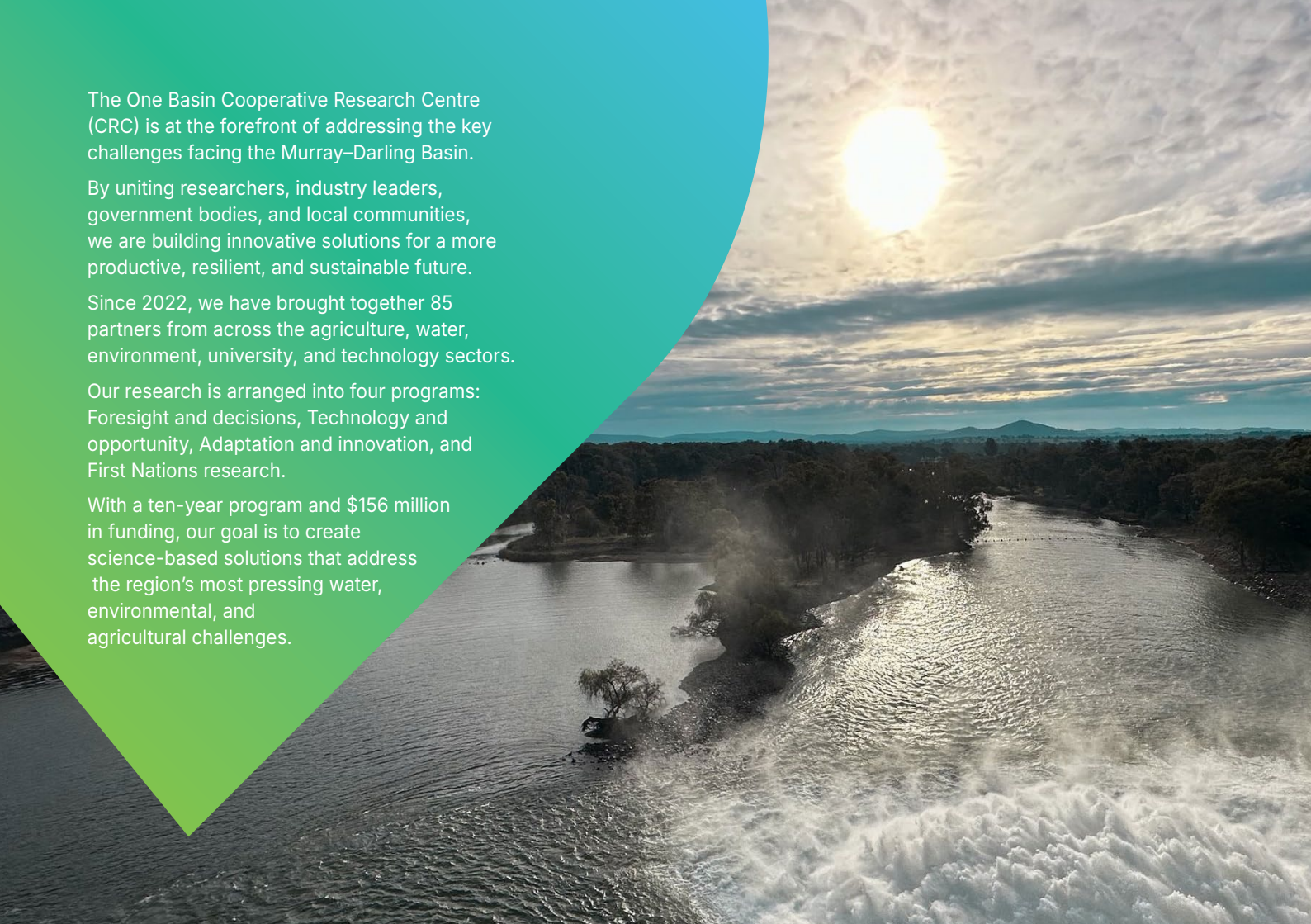
The One Basin Cooperative Research Centre (CRC) is at the forefront of addressing the key challenges facing the Murray–Darling Basin.

By uniting researchers, industry leaders, government bodies, and local communities, we are building innovative solutions for a more productive, resilient, and sustainable future.

Since 2022, we have brought together 85 partners from across the agriculture, water, environment, university, and technology sectors.

Our research is arranged into four programs: Foresight and decisions, Technology and opportunity, Adaptation and innovation, and First Nations research.

With a ten-year program and \$156 million in funding, our goal is to create science-based solutions that address the region's most pressing water, environmental, and agricultural challenges.



# Why partner with the One Basin CRC?

Joining the One Basin CRC offers your organisation the opportunity to help direct critical research efforts and find solutions for the challenges that impact the Murray–Darling Basin.

As a partner, you will be part of a large, diverse, and dynamic network of industry experts, researchers, and community leaders, all committed to driving sustainable innovation in the region.



**Shape research and innovation:** Partners have the opportunity to shape the CRC's R&D program, influencing projects that address the most pressing issues facing the basin, including water availability, climate resilience, and agricultural innovation.



**Tackle key challenges:** The basin faces urgent challenges in adapting to climate change, improving water efficiency, and ensuring environmental and economic sustainability. By partnering with the One Basin CRC, your organisation can actively contribute to tackling these complex issues.



**Network and collaborate:** Benefit from a vast network of 85+ partners across industries, regions, and sectors. Collaborate with leading experts and organisations who share your interest in shaping the future of the Murray–Darling Basin.



**Support regional growth:** Your involvement can help drive positive outcomes for regional communities and industries. The CRC is committed to supporting growth in the basin's water, environmental, agricultural, and tourism sectors.

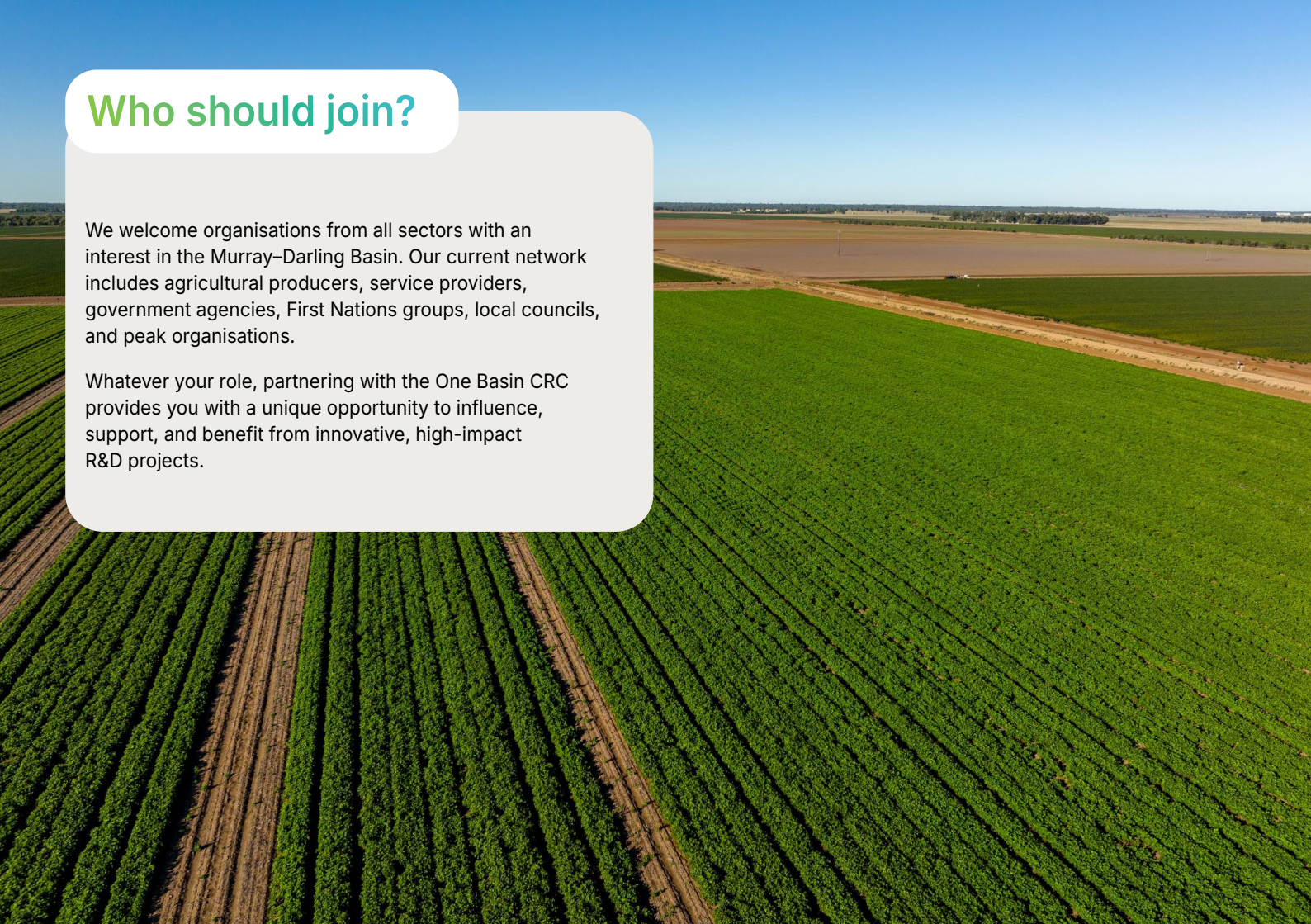


**Access education and training programs:** Leverage world-class education and training opportunities for your staff, with access to industry-linked research, regional hubs, and professional development programs aimed at building skills and knowledge for the future.

## Who should join?

We welcome organisations from all sectors with an interest in the Murray–Darling Basin. Our current network includes agricultural producers, service providers, government agencies, First Nations groups, local councils, and peak organisations.

Whatever your role, partnering with the One Basin CRC provides you with a unique opportunity to influence, support, and benefit from innovative, high-impact R&D projects.



# Partner contributions

Our tiered partnership system allows organisations of all sizes and capacities to get involved:

<b>Tier 1 industry, government and community partners:</b>	Minimum \$300k p.a. cash, approx. \$600k p.a. in-kind.	<b>Tier 2 industry, government and community partners:</b>	Minimum \$150k p.a. cash, approx. \$300k p.a. in-kind.	<b>Tier 3 industry, government and community partners:</b>	Cash and in-kind contributions as appropriate.
--	---	--	---	--	---

# Opportunities for collaboration

Organisations can engage with the One Basin CRC in various ways:



**1. Become a partner:** As a partner, you will have direct input into the CRC's R&D agenda, help shape research projects, and leverage your investment in innovative solutions. Partners can also contribute cash or in-kind support at different levels, based on their interests and capacity.



**2. Join a project:** If you have a specific interest in one of our ongoing or planned projects, there are opportunities to collaborate and expand the scope of these initiatives. By joining a project, you can steer outcomes toward priorities that matter most to your organisation.



**3. Contract us:** The CRC is available to be contracted for tailored services or products. We bring together the right experts and partners to address your specific needs, delivering impactful R&D beyond our core programs.



## How partners shape our research program

Our partners play a key role in determining the direction of the CRC's research.

By discussing your priorities and project interests with us, you can help ensure that the CRC's research efforts are relevant to your organisation and the broader basin community.

Partners also have the opportunity to join committees and contribute to project design, ensuring a strong alignment with regional and sectoral needs.

## Work with leading researchers and experts

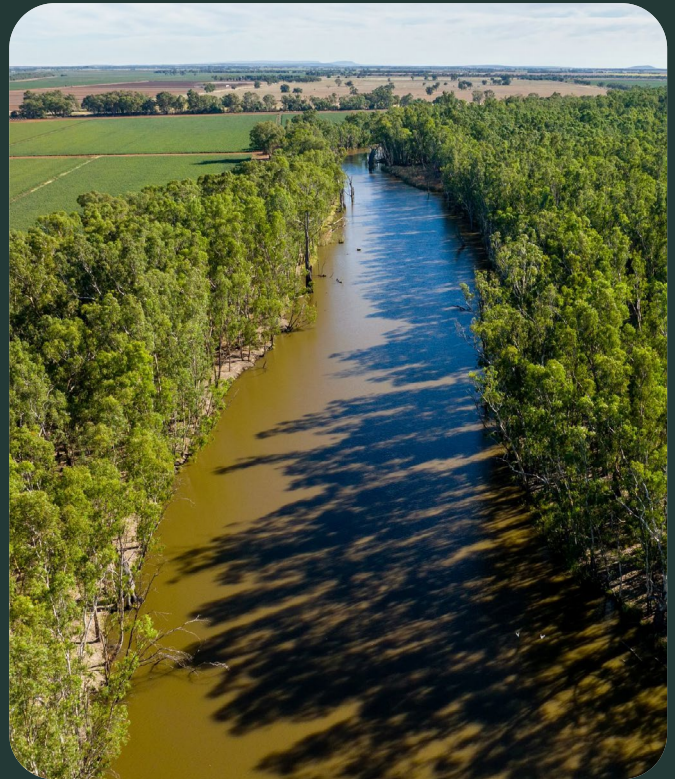
As a partner, you'll collaborate with Australia's leading researchers on solutions to key water and climate challenges.

Whether you're an agricultural producer looking to stay ahead in innovation or a rural development organisation seeking to strengthen resilience, the CRC offers cutting-edge research and practical solutions to support your goals.

## Ready to join us?

We are excited to work with new partners who share our commitment to the future of the Murray-Darling Basin.

Whether you have a specific project in mind or want to explore how partnership with the CRC can benefit your organisation, we encourage you to get in touch.





Learn more

For partnership enquiries or more information, visit our website or contact our team at [partners@onebasin.com.au](mailto:partners@onebasin.com.au) to discuss how your organisation can contribute to and benefit from the One Basin CRC.



Australian Government  
Department of Industry,  
Science and Resources

Cooperative Research  
Centres Program

