

# What is the transformative potential of conflict in navigating issues of water justice in the Murray-Darling Basin?



THE UNIVERSITY OF SYDNEY



ONE BASIN CRC



Cooperative Research Centres Program



Mallee Regional Innovation Centre

"Creativity lies at the edge of disintegration"  
- Ralph Stacey

From a complexity perspective, conflict is integral to social justice outcomes. This research aims to explore the ways in which the coming together of diverse views, anchored in historically produced narratives, may be harnessed to support social learning and in turn, just outcomes in the governance of the Murray-Darling Basin.

## Research Questions

- What is the transformative potential of conflict in navigating issues of water justice in the Murray-Darling Basin?
  - How do historically produced discourses on water justice frame the nature of conflict?
  - How are knowledge and power asymmetries reproduced and amplified by these discourses?
  - How are these discourses resisted and alternate possibilities created?

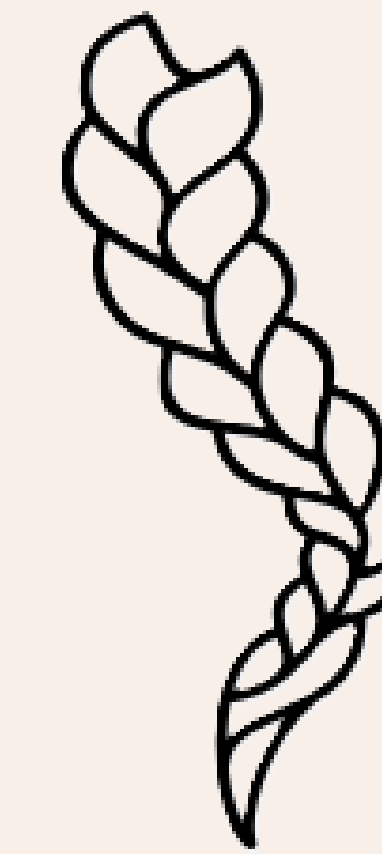
## Why?

- Understand the forces that create the pre-conditions for conflict in the Basin.
- Interrogate the social construction of people's knowledge, and the underlying power asymmetries that perpetuate water injustice.
- Examine the power of conflict in the search for solutions to water injustices.
- Respond to One Basin challenge four: realising value from and within rural industries and communities.

## Concepts of Interest



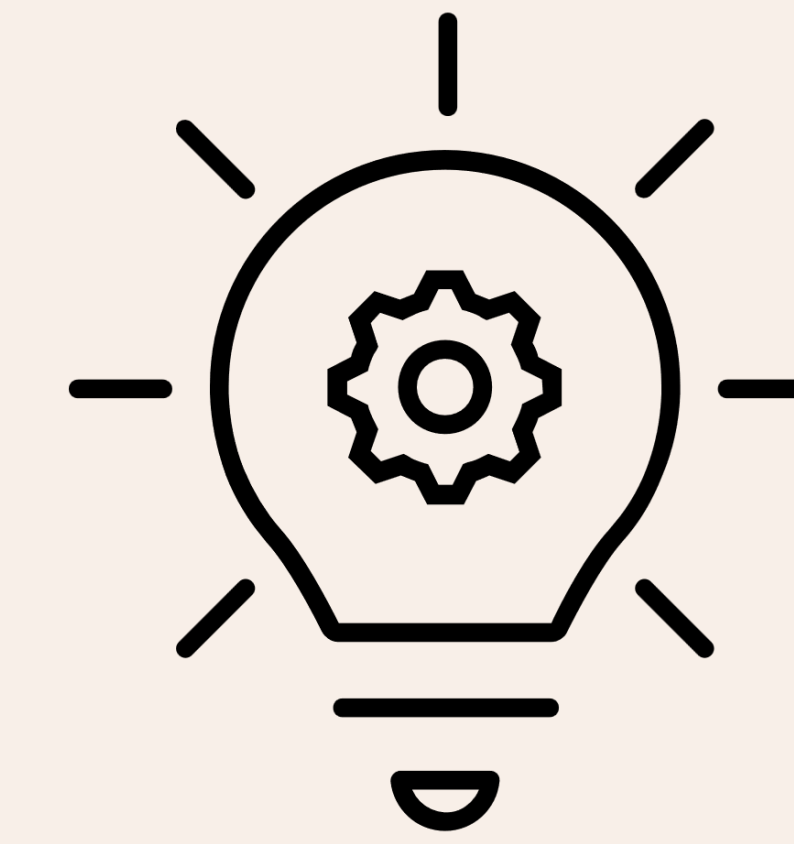
Notions of Justice



Braiding Indigenous and Western Knowledges



Conflict in Water Governance



Foucauldian Power/Knowledge



Complexity Theory in Socio-Ecological Systems

## How?

Methodology still under development. Any thoughts on concepts, methods, theories and potential case studies that tie in with or expand on the concepts above, are welcomed. So, find me for a chat if you have ideas!

Some potential threads:

- Case studies on projects / organisations undertaking deliberation and decision-making alongside Basin communities.
- Adopting decolonising research methods and reflexive practice to ensure the research is participatory, not extractive, and supports change.
- Using a socioecological systems framework to define the institutional context and scope.

## Supervisors

Assoc. Prof. Margot Rawsthorne  
Prof. Amanda Howard  
**University of Sydney**

Dr Wendy Merritt  
**Australian National University**

## Contact

Kelsy Burns  
Mildura  
PhD Student, USyd  
Extension Officer, Pistachio  
Growers Association  
kbur0973@sydney.edu.au  
0481 215 775

